



# HALOGEN UNDERWATER LIGHT FOR POOLS

## INSTALLATION AND OPERATING INSTRUCTIONS

To be read carefully and kept for future reference.



REP.	QTÉ	COMPONENTS DESCRIPTION
1	1	Underwater light
2	4	ST 4.2 L16 screw
3	1	Flange
4	1	Flange seal
5	4	CBL Z ST 3.9 x 32 A2 stainless steel screw
6	1	Stainless steel throughwall flange Ø 20
7	2	Throughwall flange seal
8	1	Washer Ø 20
9	1	HM nut M20
10	1	Stainless steel cable gland

**Never switch the light on out of the water. The light must be connected to a 50 VA / 12V transformer.**

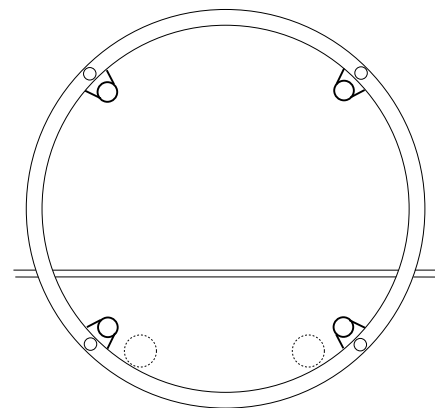
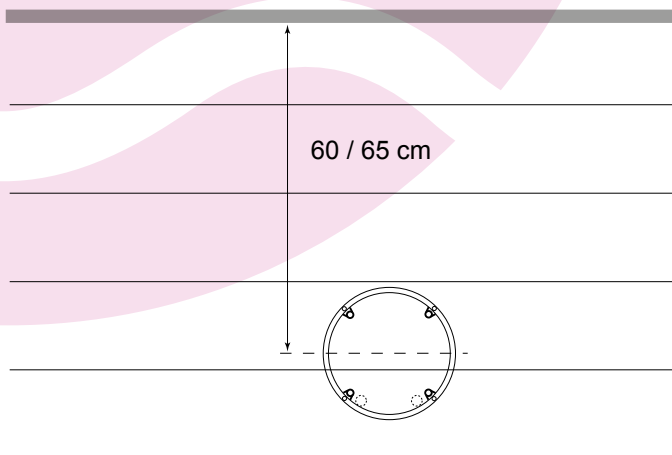
PROTECTIVE SCREEN DATA	
Material	Polycarbonate
Overall dimensions	Ø180 mm x h40 mm
Screen housing Ø	168 mm
Nominal Ø of the seal groove	170 mm
Thickness	4 mm

Before you install an underwater light in an existing swimming pool, you must empty the pool and partially remove the liner.

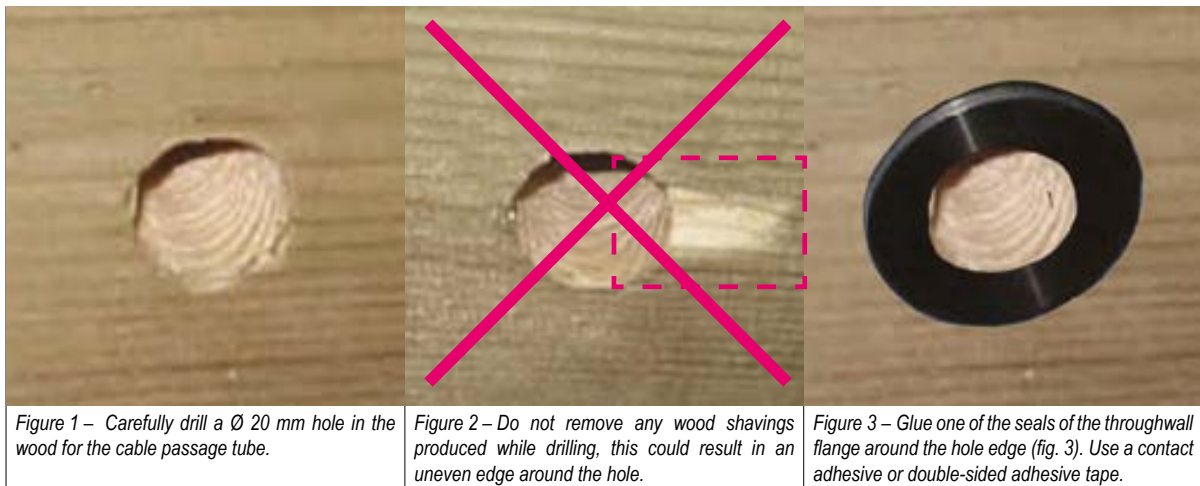
We recommend that you install the underwater light far enough from the skimmer and the water return fittings to avoid damage to these pool fittings.

## 1. OPERATIONS TO BE PERFORMED BEFORE FITTING THE LINER

Determine the installation site of the underwater light: the centre of an underwater light is usually placed at 60/65 cm from the top of the pool. Place the fastening flange as shown in the drawing below. Make sure that the holes of the flange as well as the cable passage tube do not coincide with the gaps between two boards.



Possible sites for the cable passage tube.



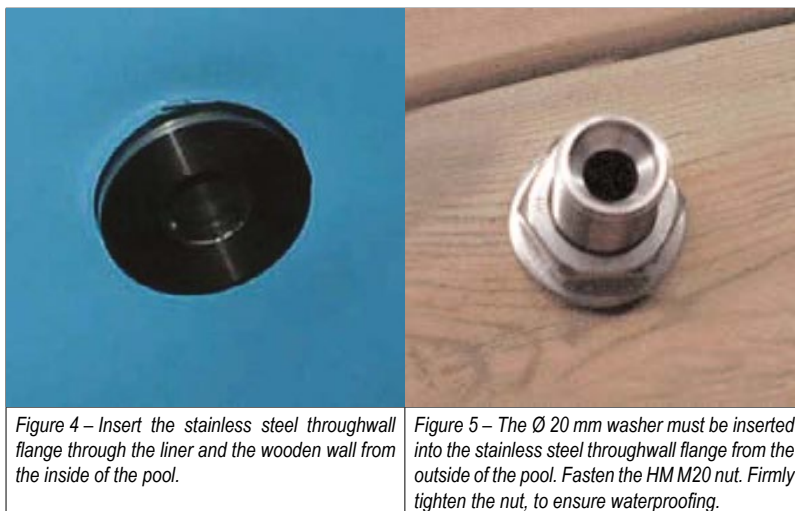
## 2. OPERATIONS TO BE PERFORMED AFTER FITTING THE LINER

**These operations must be carried out during the filling of the pool, when the water level is 5 cm below the hole of the cable passage tube.**

Mark the hole of the cable passage tube in the wood and pierce the liner at this spot. Create a hole slightly smaller in diameter than the hole drilled in the wood (approx. Ø 19 mm).

Insert the stainless steel throughwall flange through the liner and the wooden wall from the inside of the pool *Figure 4*. You must first make sure that the second seal is correctly placed on the throughwall flange. Thus, the liner is imprisoned between the two seals of the throughwall flange.

The Ø 20 mm washer must be inserted into the stainless steel throughwall flange from the outside of the pool. Fasten the HM M20 nut. **FIRMLY TIGHTEN THE NUT, TO ENSURE WATERPROOFING** *Figure 5*.



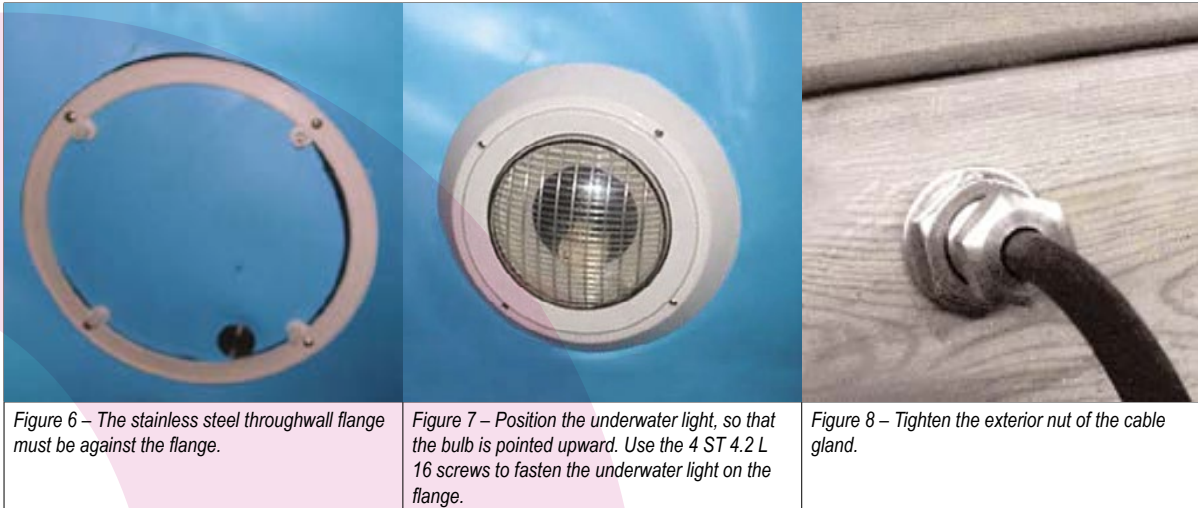
### 2.1 Inside the pool:

- Position the adhesive seal on the flange such that its holes coincide with those of the flange. Use the 4 CBL ST 3.9 x 32 screws to attach the flange to the wall. The stainless steel throughwall flange must be against the flange *Figure 6*.
- Push the underwater light cable through the stainless steel throughwall flange.

- Position the underwater light, so that the bulb is pointed upward. Use the 4 ST 4.2 L 16 screws to fasten the underwater light on the flange *Figure 7*.

## 2.2 From the outside of the pool:

Push the cable through the cable gland and screw it onto the throughwall flange (use teflon tape to ensure the waterproofing). Tighten the exterior nut of the cable gland *Figure 8*.



## 3. ELECTRICAL WIRING

- If the cable is too short to be directly connected to the transformer, use a 2 x 2.5<sup>2</sup> section cable extension. Make sure that the connection between the two cables is waterproof.
- Leave an excess cable length of approximately 80 cm inside of the swimming pool, this will allow you to take out the underwater light and change the bulb without emptying the pool (see chapter below).
- Make the necessary connections in the control panel at the two terminals reserved for the underwater light (see the control panel installation and operating instructions).

## 4. CHANGING THE LAMP

- Remove the 4 screws holding the underwater light in position.
- From the outside of the pool, feed the cable through to the inside of the pool until there is a sufficient length to allow the underwater light to be laid on the deck.
- Disassemble the underwater light (8 screws at the back).
- Remove and replace the bulb with an identical bulb (halogen 12V 50W - Q50 GY6.35 M32). Avoid touching the new bulb with your fingers.
- Reassemble the rear part of the underwater light making sure that the seal is properly positioned (preferably use a new seal).
- Attach the underwater light to the flange.

## 5. RECOMMENDATIONS

- Do not use the underwater light if the protective screen is cracked. Cracked screens must be replaced. The spare part reference for the screen is 44450018.
- To avoid any risk, damaged underwater light cables may only be replaced by the manufacturer, the manufacturer's maintenance service or a person duly accredited for this type of intervention.

